

Appendix D – Institutional Summary

This summary contains vital information about SDSM&T including address, president, provost, its organization and control.

A. The institution

- a. South Dakota School of Mines and Technology
501 E. Saint Joseph St.
Rapid City, SD 57701

- b. Dr. Heather Wilson, President
O’Harra building, room 215a
Heather.Wilson@sdsmt.edu
605-215-2411

- c. Dr. Demitris Kouris, Provost and Vice President for Academic Affairs
O’Harra building, room 215b
Demitris.Kouris@sdsmt.edu
605-394-2256

- d. Organizations by which the institution is now accredited and the dates of the initial and most recent accreditation evaluations.

Accreditation Unit	Date of Initial Accreditation	Date of Most Recent Accreditation or Approval
Higher Learning Commission of the North Central Association	1925	2014-2015
Engineering Accreditation Commission of ABET, Inc.	1936	Mining Engineering 2010 Chemical Engineering 2011 Civil Engineering 2011 Computer Engineering 2011 Electrical Engineering 2011 Geological Engineering 2011 Industrial Engineering and Engineering Management 2011 Mechanical Engineering 2011 Metallurgical Engineering 2011
American Chemical Society*	1950	Chemistry 2007 (approval for 2015 review cycle is pending)
Computing Accreditation Commission of ABET, Inc.	1992	Computer Science 2014

* The American Chemical Society “approves” programs in chemistry on a 5-year review cycle

B. Type of control

State public university, governed by the South Dakota Board of Regents

C. Educational unit

Academic Affairs at SD Mines is a single division without colleges. Fifteen departments (listed in Section 4 below) offer 16 undergraduate programs, 14 Master's programs, and 9 Ph.D. programs (see <http://www.sdsmt.edu/Academics/Degrees/All-SD-Mines-Degrees/>). The department heads and program chairs or directors meet twice monthly with Dr. Kouris, Provost and Vice President for Academic Affairs, in the Academic Leadership Council (ALC). In addition, the department heads meet as needed on a one-on-one with the provost.

The department heads of all programs under review by the EAC of ABET, Inc. in the 2016-2017 cycle are members of the Academic Leadership Council (ALC) and, as such, report directly to the provost. The provost reports directly to Dr. Wilson, President of SD Mines. An associate provost, Dr. Kate Alley, and an associate provost for academic administration, Molly Moore, assist the provost but are not members of the ALC.

The Dean of Graduation Education, Dr. Doug Wells, reports to Dr. Kouris, Provost and Vice President for Academic Affairs and is a member of the ALC. (See the Office of Graduate Education at (<http://www.sdsmt.edu/GraduateEducation/>).

Additional units reporting directly to the provost include the Center for Advanced Manufacturing and Production (CAMP), the Deveraux Library, Information Technology Services, Admissions and the Registrar and Academic Services, the Museum of Geology, Youth Programs, and the Women in Science and Engineering program.

The organizational chart for SD Mines is below in Figure D-1 and can be viewed in larger format online at

<http://www.sdsmt.edu/About/Office-of-the-President/Organizational-Chart/>

D. Academic support units

The following are the department names and the names and titles of the individuals responsible for each of the units that teach courses required by the program being evaluated or may be taken by students in the program being evaluated:

Chemical and Biological Engineering

Dr. Robb M Winter, Head and Professor Chemical and Biological Engineering, Chemical and Biological Engineering building, room 2202A, (605) 394-1237, robb.winter@sdsmt.edu secretary: Lila.Baskerville@sdsmt.edu, 605-394-2421

Chemistry and Applied Biological Sciences

Dr. Richard R Sinden, Head and Professor Chemistry and Applied Biological Sciences, Chemical and Biological building, room C219, (605) 394-1678, Richard.Sinden@sdsmt.edu, secretary: Tara.Huber@sdsmt.edu (605) 394-1238

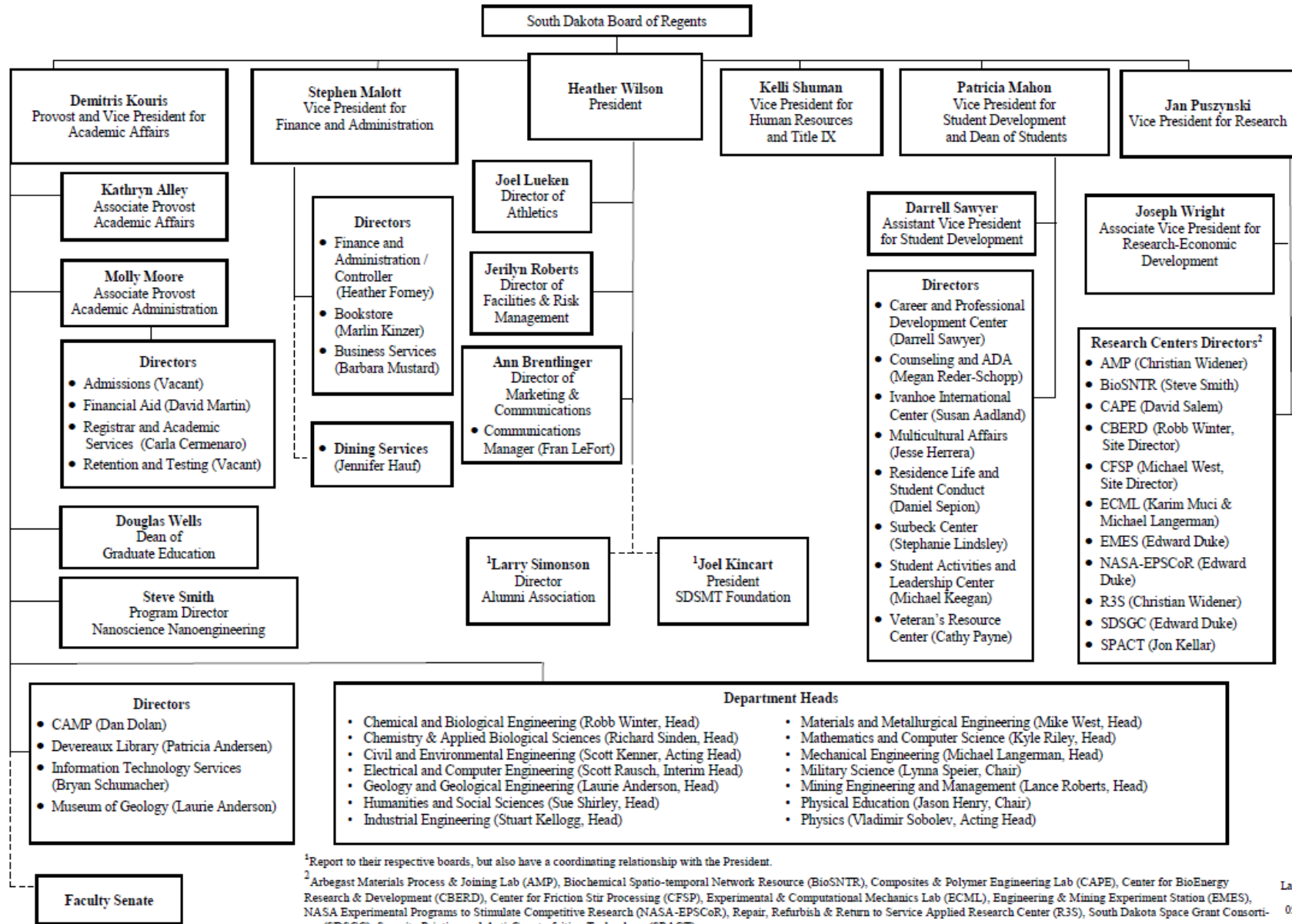


Figure D-1 Organizational Chart for SD Mines (updates 05/04/16)

Civil and Environmental Engineering

Dr. Scott J Kenner, Interim Department Head and Professor Civil and Environmental Engineering, Civil and Mechanical Engineering building, room 122, (605) 394-1697, scott.kenner@sdsmt.edu secretary: Ellen.Haffner@sdsmt.edu (605) 394-2490

Electrical and Computer Engineering

Dr. Scott E Rausch, Interim Department Head and Instructor Electrical and Computer Engineering, Electrical and Computer Engineering building, room 318, (605) 394-1219, Scott.Rausch@sdsmt.edu secretary: deb.tompkins@sdsmt.edu (605) 394-2451

Geology and Geological Engineering

Dr. Laurie C Anderson, Head and Professor Geology and Geological Engineering, Metallurgical building, room 303, (605) 394-1290, Laurie.Anderson@sdsmt.edu secretary: Cleo.Heenan@sdsmt.edu (605)-394-2461

Humanities

Dr. Sue Shirley, Head Social Sciences, Head and Professor Humanities, Classroom building, room 310, (605) 394-2482, susan.shirley@sdsmt.edu secretary: debra.zeidler@sdsmt.edu (605) 394-2481

Industrial Engineering

Dr. Stuart Kellogg, Department Head and Pietz Professor Industrial Engineering, Devereaux Library lower level, (605) 394-6152, stuart.kellogg@sdsmt.edu secretary: c.krein@sdsmt.edu (605) 394-1271

Materials and Metallurgical Engineering

Dr. Michael K West, Head and Associate professor Materials and Metallurgical Engineering, Metallurgical building, room 108, (605) 394-1283, Michael.West@sdsmt.edu secretary Jessica.Zacher@sdsmt.edu (605) 394-2341

Mathematics and Computer Science

Dr. Kyle L Riley, Head and Professor Mathematics and Computer Science, Math and Computer Science building, room 308, (605) 394-2471, kyle.riley@sdsmt.edu secretary: Reta.Davies@sdsmt.edu, (605) 394-2471

Mechanical Engineering

Dr. Michael A. Langerman, Head and Professor, Mechanical Engineering Civil and Mechanical Engineering building, room 133, (605) 394-2408, michael.langerman@sdsmt.edu, secretary: Leslee A Moore (605) 394-2401

Military Science

Col Lynna M. Speier, Classroom building room 115, (605)-394-2769, Lynna.Speier@sdsmt.edu

Mining Engineering and Management

Dr. Lance A. Roberts, Head and Professor Mining Engineering and Management, Metallurgical building, room 235B, 605-394-1973, Lance.Roberts@sdsmt.edu secretary: cindy.hise@sdsmt.edu, (605) 394-2344

Physical Education

Jason P. Henry, Head Men's Basketball Coach/Assistant Athletic Director/Department Chair/Associate Professor, King Center building, room 118, (605) 355-3023, Jason.Henry@sdsmt.edu

Physics

Dr. Andre Petukhov, Head and Professor Physics, Electrical and Computer Engineering building, room 235A, (605) 394-2364, Andre.Petukhov@sdsmt.edu secretary: Connie.Krosschell@sdsmt.edu, (605) 394-2361

Social Sciences

Dr. Sue Shirley, Head Social Sciences, Head and Professor Humanities, Classroom building, room 310, (605) 394-2482, susan.shirley@sdsmt.edu secretary: debra.zeidler@sdsmt.edu (605) 394-2481

E. Non-academic support units

The following are the department names and the names and titles of the individuals responsible for each of the units that provide non-academic support to the program being evaluated:

Admissions

Molly Moore, O’Harra building room 216A, 605-394-5236, Molly.Moore@sdsmt.edu

Athletic Department

Joel Lueken, King Center room 113, 605-394-2352, Joel.Lueken@sdsmt.edu

The Career and Professional Development Center

Darrell Sawyer, Surbeck Center, (605) 394-2667, Darrell.Sawyer@sdsmt.edu

Dean of Students Office

Dr. Patricia Mahon, Surbeck Center, (605) 394-2416, Patricia.Mahon@sdsmt.edu

Devereaux Library

Patricia M Andersen, Library 213, (605) 394-1255, Patricia.Andersen@sdsmt.edu

Disability Services/ADA – Counseling

Megan Reder-Schopp, Surbeck Center, 394-6988, Megan.Reder-Schopp@sdsmt.edu

Information Technology Services

Bryan J Schumacher, Electrical Engineering Building room 134, (605) 394-5102, Bryan.Schumacher@sdsmt.edu

Ivanhoe International Center

Susan R Aadland, Surbeck Center room IIC, (605) 394-6884, Susan.Aadland@sdsmt.edu

Multicultural Affairs

Jesse Herrera, Surbeck Center lower Level, (605) 394-1828, Jesse.Herrera@sdsmt.edu

Office of Residence Life

Dan Sepion, Surbeck Center, (605) 394-2348, Daniel.Sepion@sdsmt.edu

Office of the Registrar and Academic Services

Carla Cermenaro, O’Harra building room 201, 605-394-2649,
Carla.Cermenaro@sdsmt.edu

The Omniciye Bridge Program and Jump Start Program

Jesse Herrera, Surbeck Center lower Level, (605) 394-1828, Jesse.Herrera@sdsmt.edu

Student Activities and Leadership Center

Michael Keegan, Surbeck Center lower level, (605) 394-2336,
Michael.Keegan@sdsmt.edu

Testing, Tutoring and Academic Support

Tom Mahon, Devereaux Library room 110, (605) 394-2428, Thomas.Mahon@sdsmt.edu

Tiospaye in Engineering and Tiospaye in Science Program

Dr. Carter J. Kerk, McLaury 104A, room 309, (605) 394-1291/(605) 394-6067,
carter.kerk@sdsmt.edu

University Counseling

Megan Reder-Schopp, Surbeck Center, 394-6988, Megan.Reder-Schopp@sdsmt.edu

Veterans’ Resource Center

Cathy Payne, Surbeck Center lower level, (605) 394-2560, catherine.payne@sdsmt.edu

Women in Science and Engineering (WiSE)

Lisa Carlson, McLaury room 202, (605) 394-5261, Lisa.Carlson@sdsmt.edu

F. Credit unit

One semester credit represents one class hour or three laboratory hours per week. One academic year normally represents at least 28 weeks of classes, exclusive of final examinations.

G. Tables

Tables D-1 and D-2 show enrollment data and summarize personnel data for the BS Metallurgical Engineering program.

Table D-1 BS Metallurgical Engineering Program Enrollment and Degree Data

Academic Year	FT/PT	Year of matriculation (fall enrollment)					Total undergrad	Total grad	Degrees awarded (For one year period)			
		1st	2nd	3rd	4th	5th			Assoc (N/A)	Bachelors (Met Eng)	MS*	PhD*
2015-16 (Current)	FT	48	32	17	25		122	20		17	6	0
	PT	1		3	7		11	14				
2014-15	FT	42	17	17	26		102	20		13	8	2
	PT		2	4	3		9	12				
2013-14	FT	21	20	8	27		76	19		7	5	2
	PT	3	1		2		6	10				
2012-13	FT	15	12	17	19		63	22		14	6	1
	PT		1		4		5	11				
2011-12	FT	20	15	21	19		75	22		16	7	1
	PT		1				1	9				

*Number of MES and Biomedical Engineering graduates having a MET ENG major thesis advisor

Table D-2 Personnel in Metallurgical Engineering in 2015-16

Category	HEAD COUNT		FTE
	FT	PT	
Administrative (West)	1		0.5
Faculty (tenure-track) (Crawford, Cross, Jasthi, Kellar, Safarzadeh, Salem, West, Widener)	8		7.5
Other faculty (Howard)		1	0.3
Student teaching assistants		5	5.0
Technicians/specialists (Hong, Meruga, Qiung, Randle)	3	1	4.064
Office/clerical employees (Schweigerdt, Zacher)	2		2.0
Others (none)			

One FTE equals the institutional-defined full-time load. For student teaching assistants, one FTE equals 20 hours per week of work or service. For undergraduate and graduate students, one FTE equals 15 semester credit-hours per term of institutional course work.

Table D-3 SDSM&T executive										
Cohort Data										
	Entering Cohort Year	2011	2010	2009	2008	2007	2006	2005	2004	2003
1. Student Success	Exit -- Year Six	2017	2016	2015	2014	2013	2012	2011	2010	2009
Prepare more undergraduate	Goal									
Six year graduation rate (Full-time freshmen)	>54%				52.3%	45.1%	54.2%	47.7%	43.3%	35.0%
	Graduating Cohort	2017	2016	2015	2014	2013	2012	2011	2010	2009
Placement rate (12 months)	>96%				98%	98%	98%	97%	97%	96%
Annual Data										
1. Student Success (Lead: Provost and Dean of Students)		2017	2016	2015	2014	2013	2012	2011	2010	2009
Prepare more undergraduate	Goal									
Total Headcount Fall Enrollment	3500			2843	2798	2640	2424	2311	2354	2177
Headcount Undergraduate Fall Enrollment	3000			2485	2471	2328	2101	2008	2050	1913
FTE Fall Undergraduate Enrollment	>2800			2404	2391	2234	2070	1982	1997	1846
First-time, full-time Freshman enrolled	650			495	591					
First-time, full-time Freshman-Sophomore Retention @Mines (From starting year.)	>83%				75.1%	77.6%	79%	79.8%	78.1%	78.3%
Annual number of Associate Degrees (AY-Aug to Aug)					1	7	5	10	5	8
Annual number of Bachelors Degrees (AY-Aug to Aug)	>400				291	289	250	237	277	214

Table D-3 SDSM&T executive metrics (cont'd)

2. Research (Lead: VP of Research)			2015	2014	2013	2012	2011	2010	2009
Increase research to prepare science and	Goal								
Research Grant and Contract Expenditure (FY**), \$'s in Millions	Steady Growth		\$14.09	\$ 9.38	\$10.73	\$16.56	\$31.75	\$27.55	\$13.00
PhD Fall Enrollment	140		115	94	89	90	78	93	76
Masters Degree Fall Enrollment	360		228	233					
Annual number of PhD Graduates (AY-Aug to Aug)	>20			9	18	5	8	8	Data
Annual number of Master's Degree Graduates (AY-Aug to Aug)				91	82	77	84	66	data
Annual number of Professional (non-thesis) Masters Degree Graduates (AY-Aug to Aug)				46	54	36	n/a	n/a	n/a
Annual number of Research (thesis) Masters Degree Graduates (AY-Aug to Aug)				45	28	41	n/a	n/a	n/a
Invention Disclosures (FY)			16	11	19	14	5	4	1
License agreements executed (FY)			2	4	2	0			

Table D-3 SDSM&T executive metrics (cont'd)

3. Facilities (Lead: Director of Facilities)					2015	2014	2013	2012	2011	2010	2009
Redevelop and expand need living, learning											
	Facility Condition Index -- Dorms/Surbeck/Wellness: Maintenance, Repair, Replacement Deficiencies/Current Replacement Value (<.05=Good; .05 - .10=Fair; >.1=Poor)	<.1			0.012						
	Facility Condition Index -- Classrooms/Labs/Plant/Stadium/Library: Maintenance, Repair, Replacement Deficiencies/Current Replacement Value (<.05=Good; .05 -.10=Fair; >.1=Poor)	<.1			0.21						
	Average Weekly Classroom Hours of Instruction (Total Room hours of instruction/number of classrooms)	35				19.8	20.6	19.4	20.4	n/a	n/a
	Average Weekly Use of Student Stations in Classrooms (Total Student Contact Hours/Total Student Stations)	22.75				13.2	12.1	11.5			
	Average Weekly Class lab hours of instruction (Total room hours of instruction/total number of class labs)	20				16.4	14.9	13.6	13.5	n/a	n/a
	Average Weekly Use of Student Stations in Class Labs (Total Student Contact Hours/Total Student Stations)	16				15.6	6.9	6.8			

Table D-3 SDSM&T executive metrics (cont'd)

4. People (Lead: VP Human Resources)				2015	2014	2013	2012	2011	2010	2009
Recruit, develop and retain excellent faculty and										
	Noel-Levitz SSI Benchmark Score for Service Excellence (Seniors) - Importance (7-Point Scale)			5.57	5.63	5.78	5.63	5.60	5.65	5.57
	Noel-Levitz SSI Benchmark Score for Service Excellence (Seniors) - Satisfaction (7-Point Scale)			4.96	5.18	5.27	5.17	5.10	5.16	5.06
	Noel-Levitz SSI Benchmark Score for Service Excellence (Seniors) - Gap			-0.6	-0.45	-0.51	-0.46	-0.50	-0.49	-0.51
	Noel-Levitz SSI Benchmark Score for Instructional Effectiveness (Seniors) - Importance (7-Point Scale)			6.35	6.17	6.23	6.15	6.06	6.15	6.03
	Noel-Levitz SSI Benchmark Score for Instructional Effectiveness (Seniors) - Satisfaction (7-Point Scale)			5.41	5.45	5.56	5.36	5.35	5.47	5.27
	Noel-Levitz SSI Benchmark Score for Instructional Effectiveness (Seniors) - Gap			-0.9	-0.72	-0.67	-0.79	-0.71	-0.68	-0.76
	Noel-Levitz SSI Benchmark Score for Student Centeredness (Seniors) - Importance (7 Point Scale)			5.99						
	Noel-Levitz SSI Benchmark Score for Student Centeredness (Seniors) - Satisfaction (7 Point Scale)			5.29						
	Noel-Levitz SSI Benchmark Score for Student Centeredness (Seniors) - Gap			-0.7						
	Noel Levitz Employee Engagement (5-Point Scale)				3.98					

Table D-3 SDSM&T executive metrics (cont'd)

5. Administration (Lead: CFO)			2017	2016	2015	2014	2013	2012	2011	2010	2009
Responsibly steward financial and physical resources											
	Goal: Minimum end FY Unrestricted Cash Balance (without paying back 2013 BOR Loan), \$'s in Millions	Goal :	\$ 2.50	\$ 0.83	\$(0.85)						
	Actual Unrestricted Cash Balance (FY), \$'s in Millions				\$ 1.32	\$ (2.37)					
	Loan Repayment Amount, \$'s in Millions		\$ 1.00	\$ 0.75							
6. Development (Lead: Foundation President and Athletic Director)											
Establish a robust culture of											
	Total Foundation Fundraising (FY) (New cash plus new pledges), \$'s in Millions				\$ 5.53	\$ 9.89	\$ 6.82	\$ 6.00	\$10.50	\$ 4.10	\$ 6.10
	Total Foundation Plus Hardrock Club (FY) (New cash plus new pledges), \$'s in Millions				\$ 6.00	\$10.77	\$ 8.10	\$ 6.12	\$10.04		
	Number of Donors (FY), \$'s in Millions				2,579	2,183	1,960	2,322	2,526		

(intentionally blank)